

Diabetic Retinopathy

Ahmed Sallam, MD PhD FRCOphth (UK)

Director Uveitis Service
Retina Specialist

Associate Professor of Ophthalmology
University of Arkansas for Medical Sciences

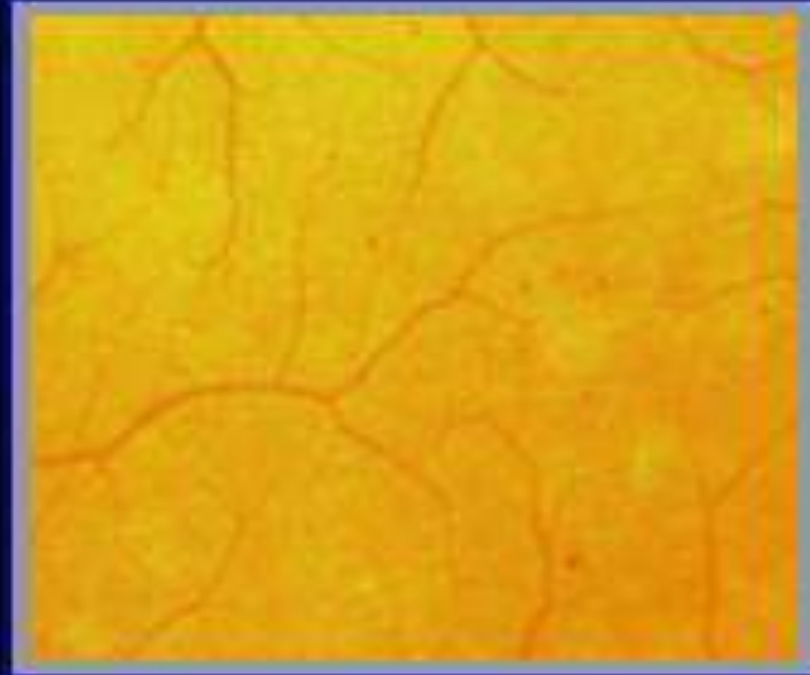
asallam@edu.uams

Retinopathy & maculopathy classification

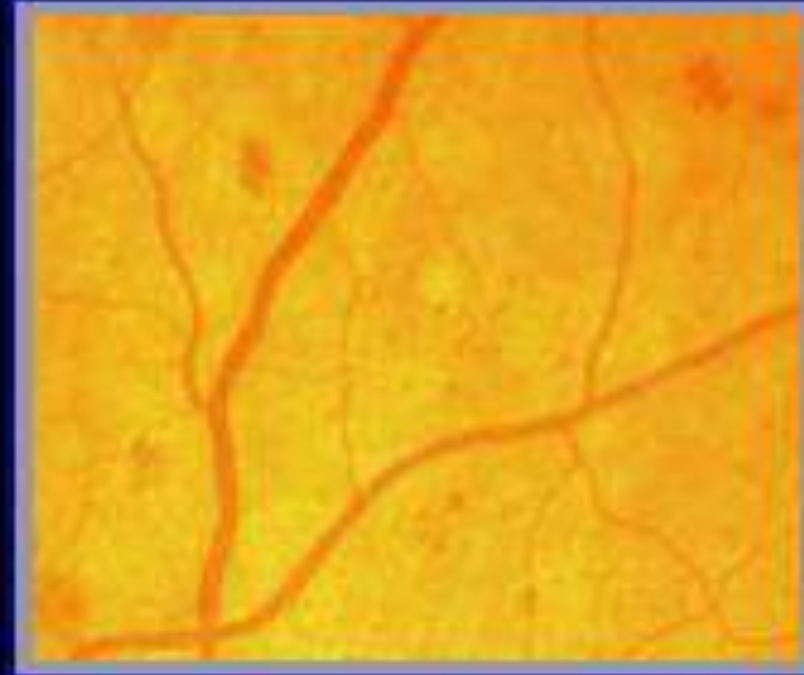
TABLE 1 DIABETIC RETINOPATHY DISEASE SEVERITY SCALE AND INTERNATIONAL CLINICAL DIABETIC RETINOPATHY DISEASE SEVERITY SCALE

Disease Severity Level	Findings Observable upon Dilated Ophthalmoscopy
No apparent retinopathy	No abnormalities
Mild NPDR (see Glossary)	Microaneurysms only
Moderate NPDR (see Glossary)	More than just microaneurysms but less than severe NPDR
Severe NPDR	
U.S. Definition	Any of the following (4-2-1 rule) and no signs of proliferative retinopathy: <ul style="list-style-type: none">• Severe intraretinal hemorrhages and microaneurysms in each of four quadrants• Definite venous beading in two or more quadrants• Moderate IRMA in one or more quadrants
International Definition	Any of the following and no signs of proliferative retinopathy: <ul style="list-style-type: none">• More than 20 intraretinal hemorrhages in each of four quadrants• Definite venous beading in two or more quadrants• Prominent IRMA in one or more quadrants
PDR	One or both of the following: <ul style="list-style-type: none">• Neovascularization• Vitreous/preretinal hemorrhage

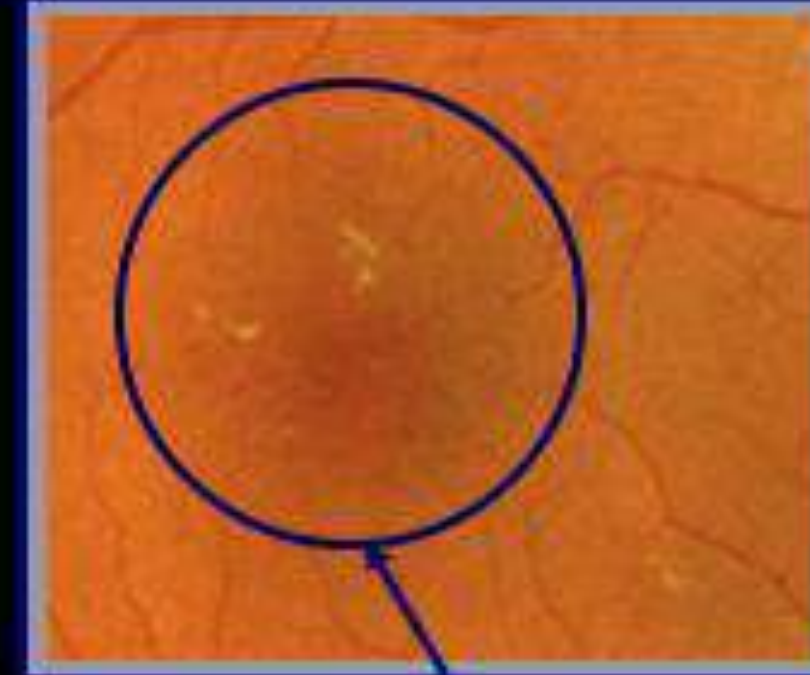
Retinopathy features & levels (No DR = R0 / Level 10)



Microaneurysms (MA)



MA + haemorrhages

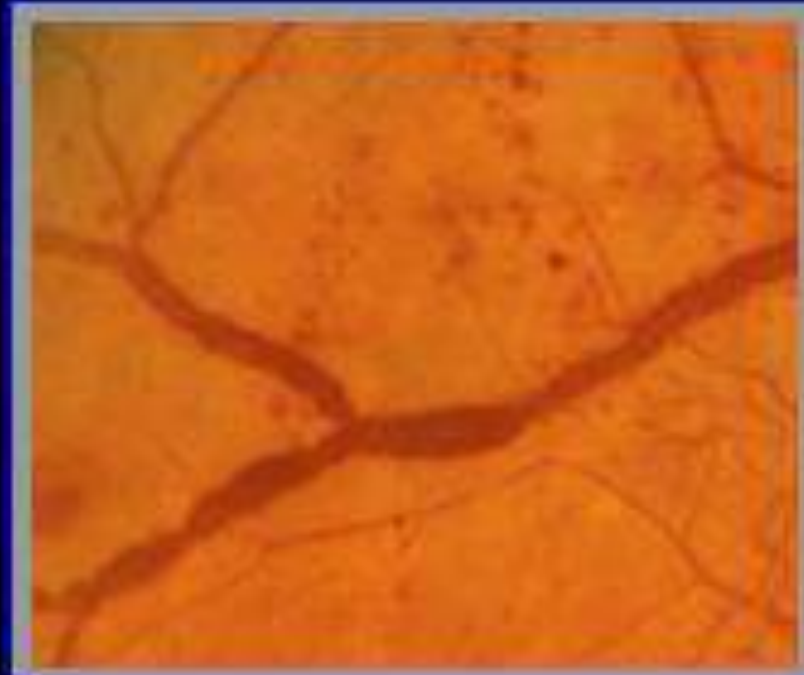


MA + hard exudate

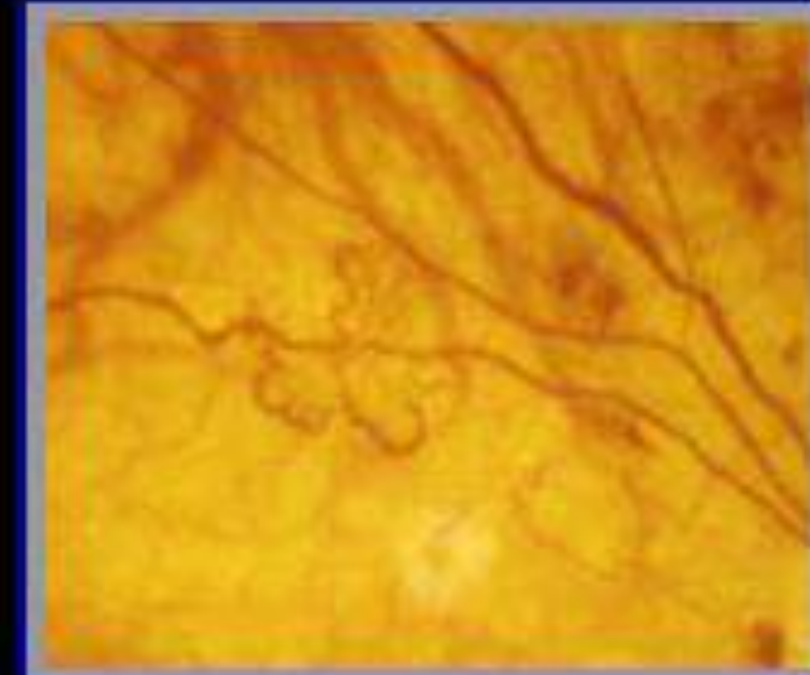
Mild NPDR - DESP: R1 ETDRS: Levels 20-35



IRMA, VB, HMA++



HMA + VB + IRMA

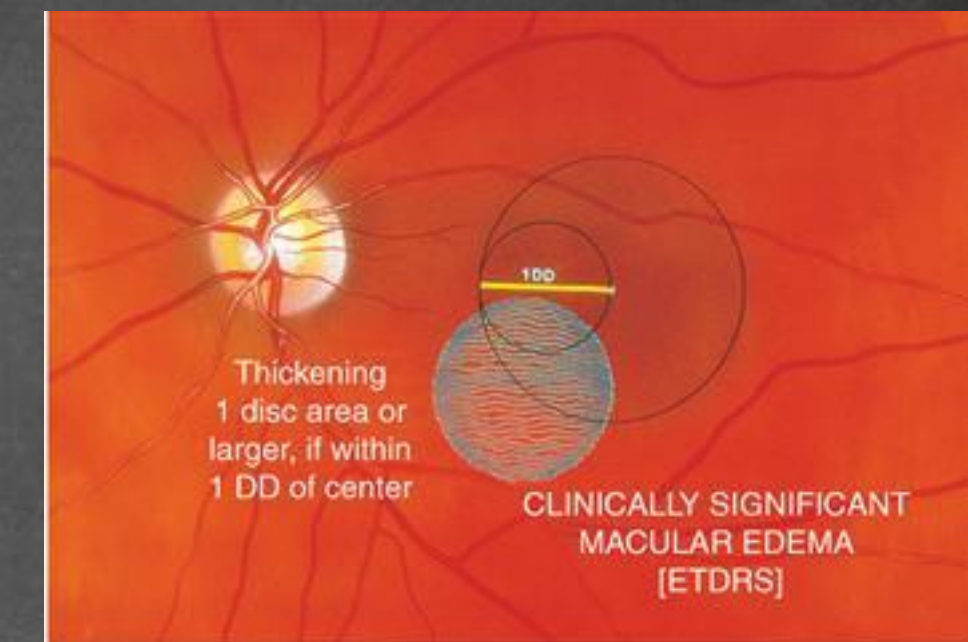
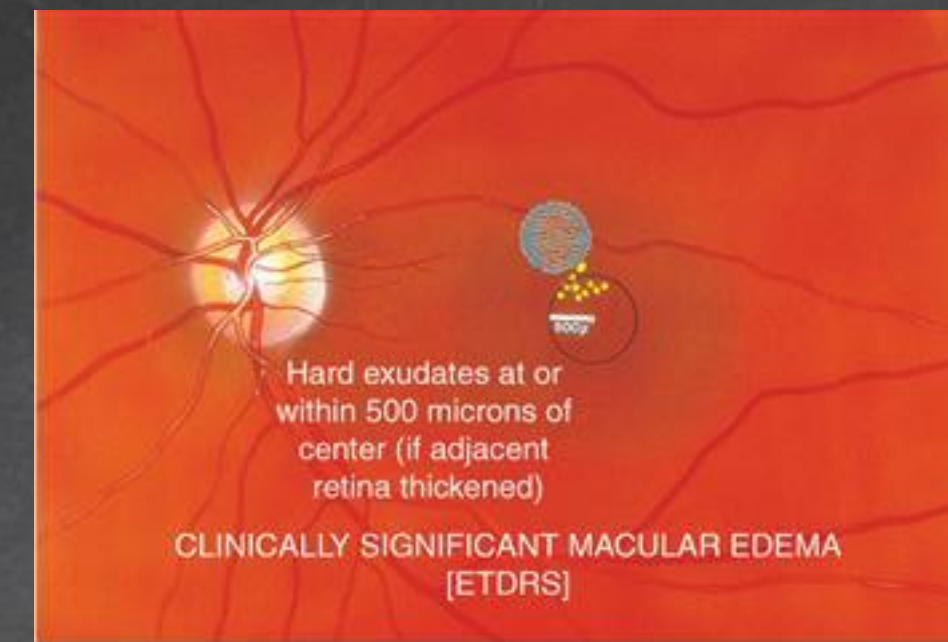
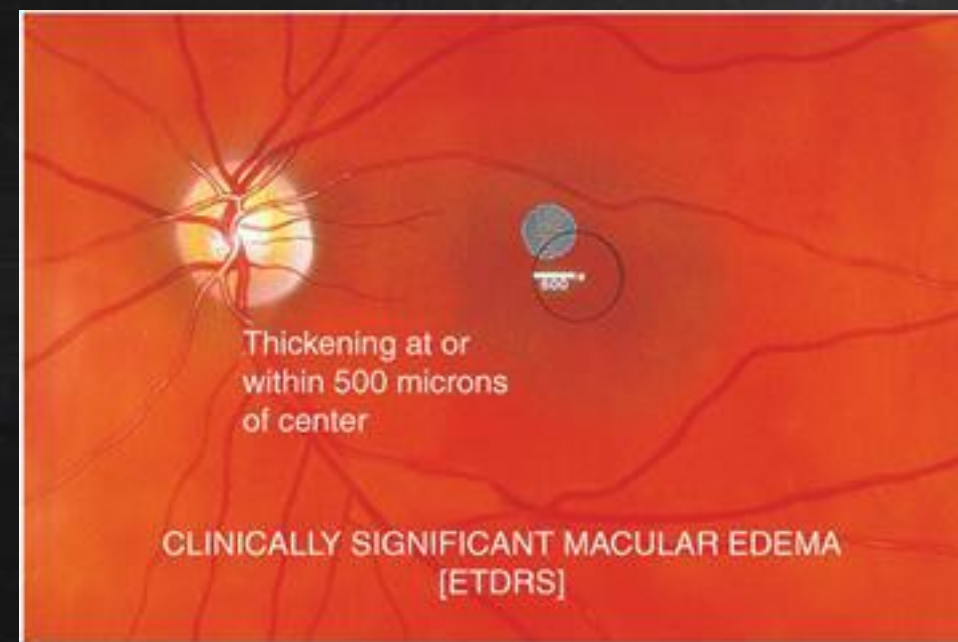


Proliferative

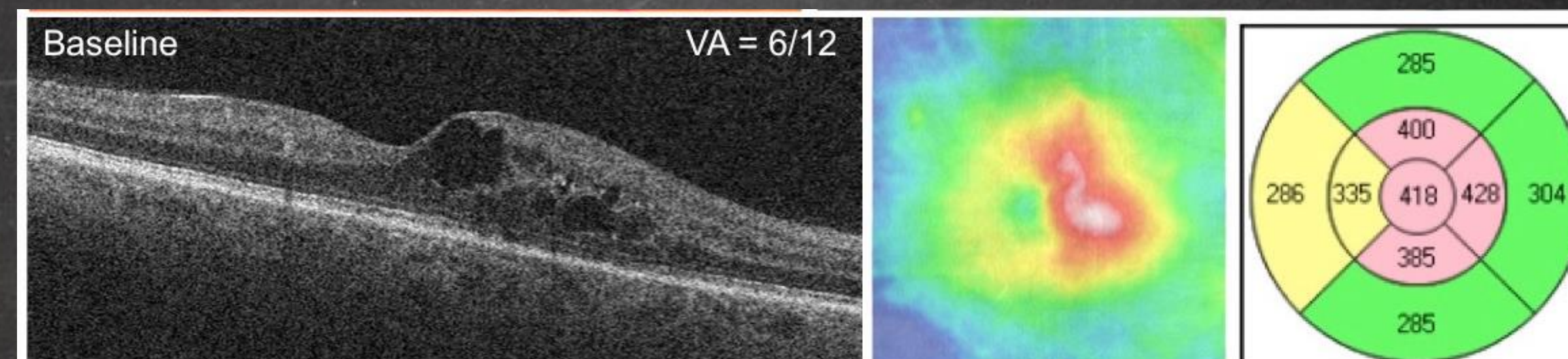
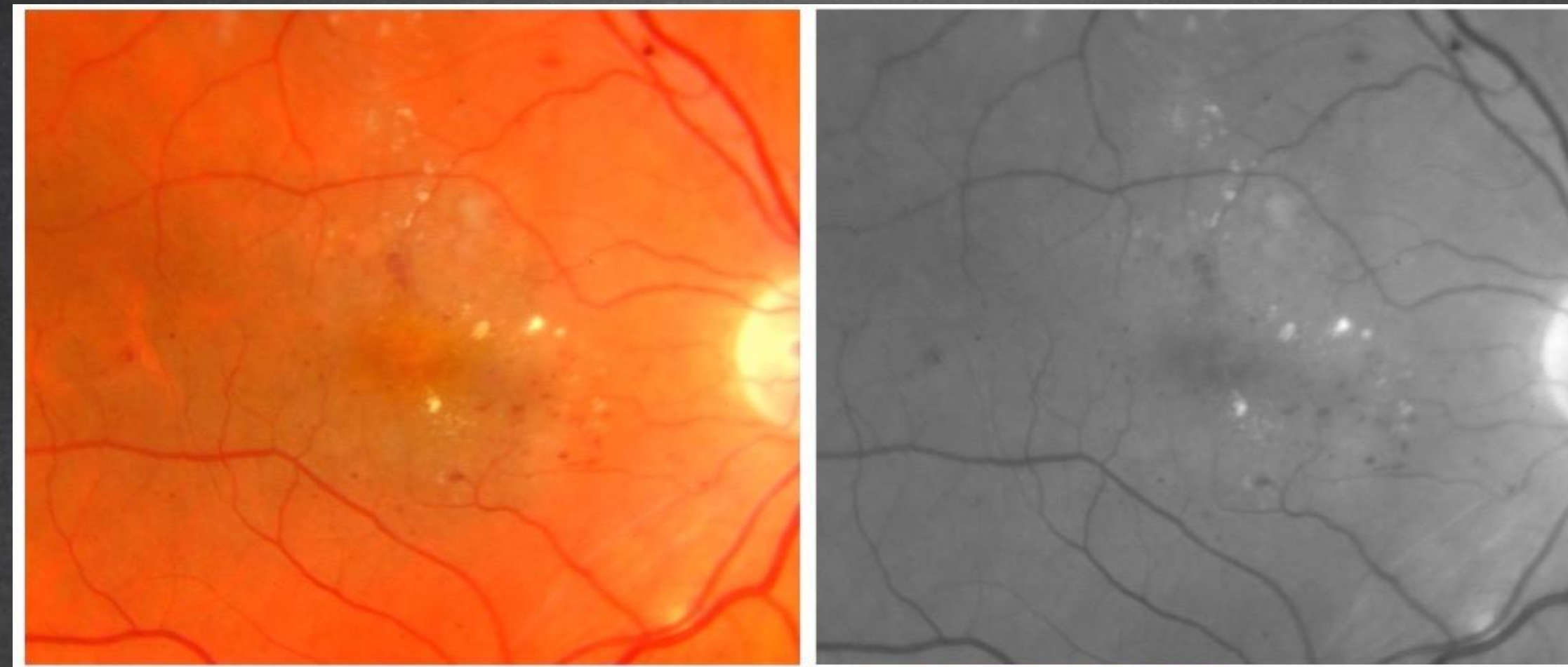
Mod to severe NPDR - DESP: R2 UKPDS: Levels 41-53

PDR - R3 / Levels 61+

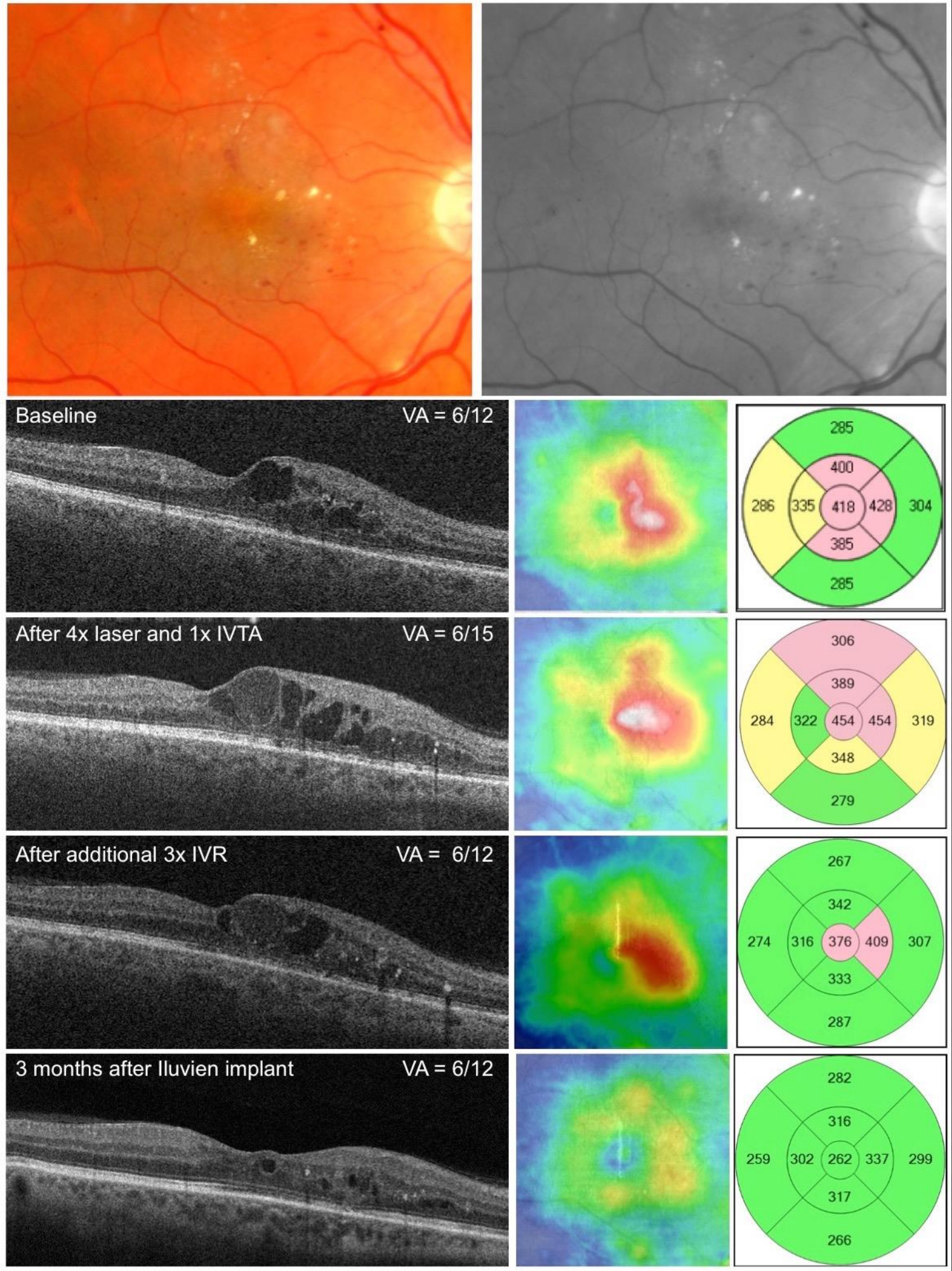
CSME
nCSME



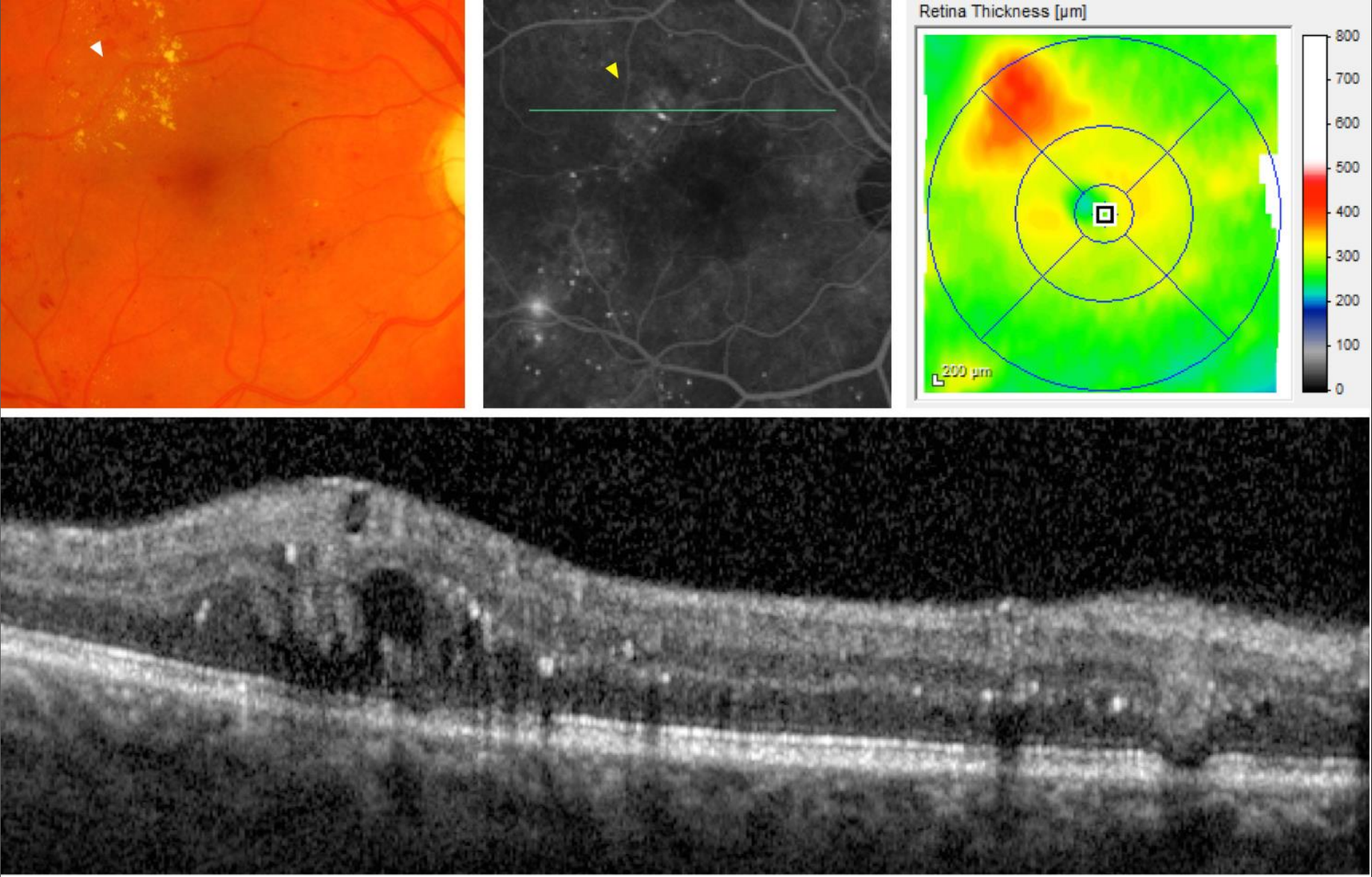
Ci DME
Cn DME



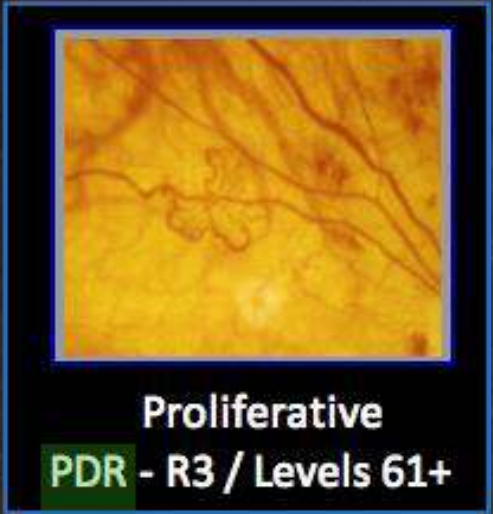
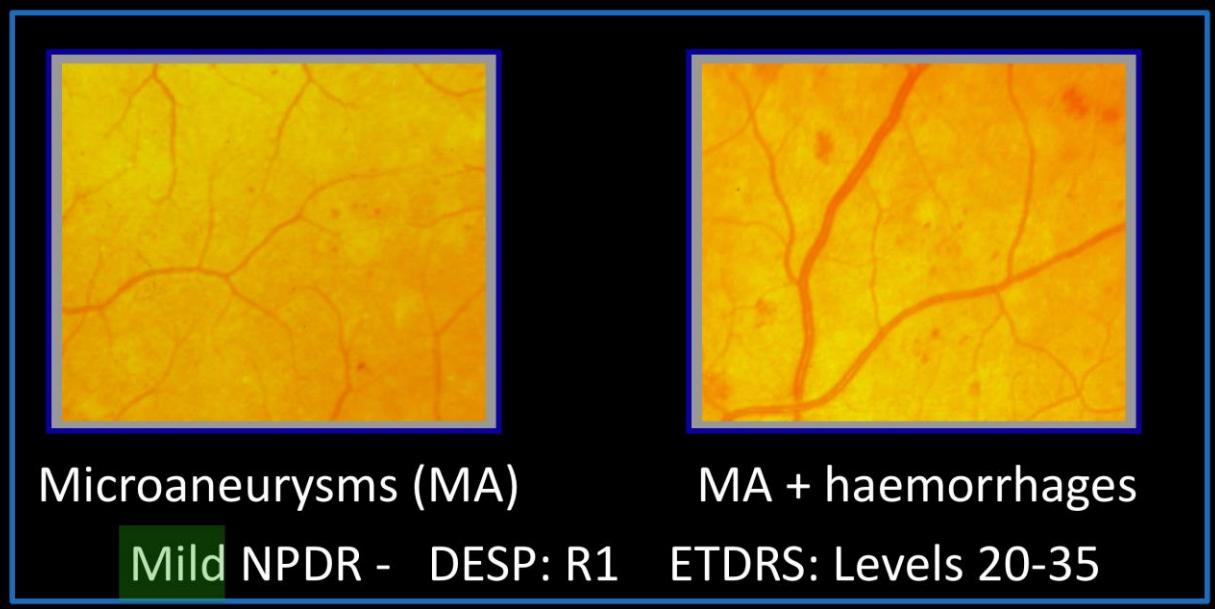
Ci DME



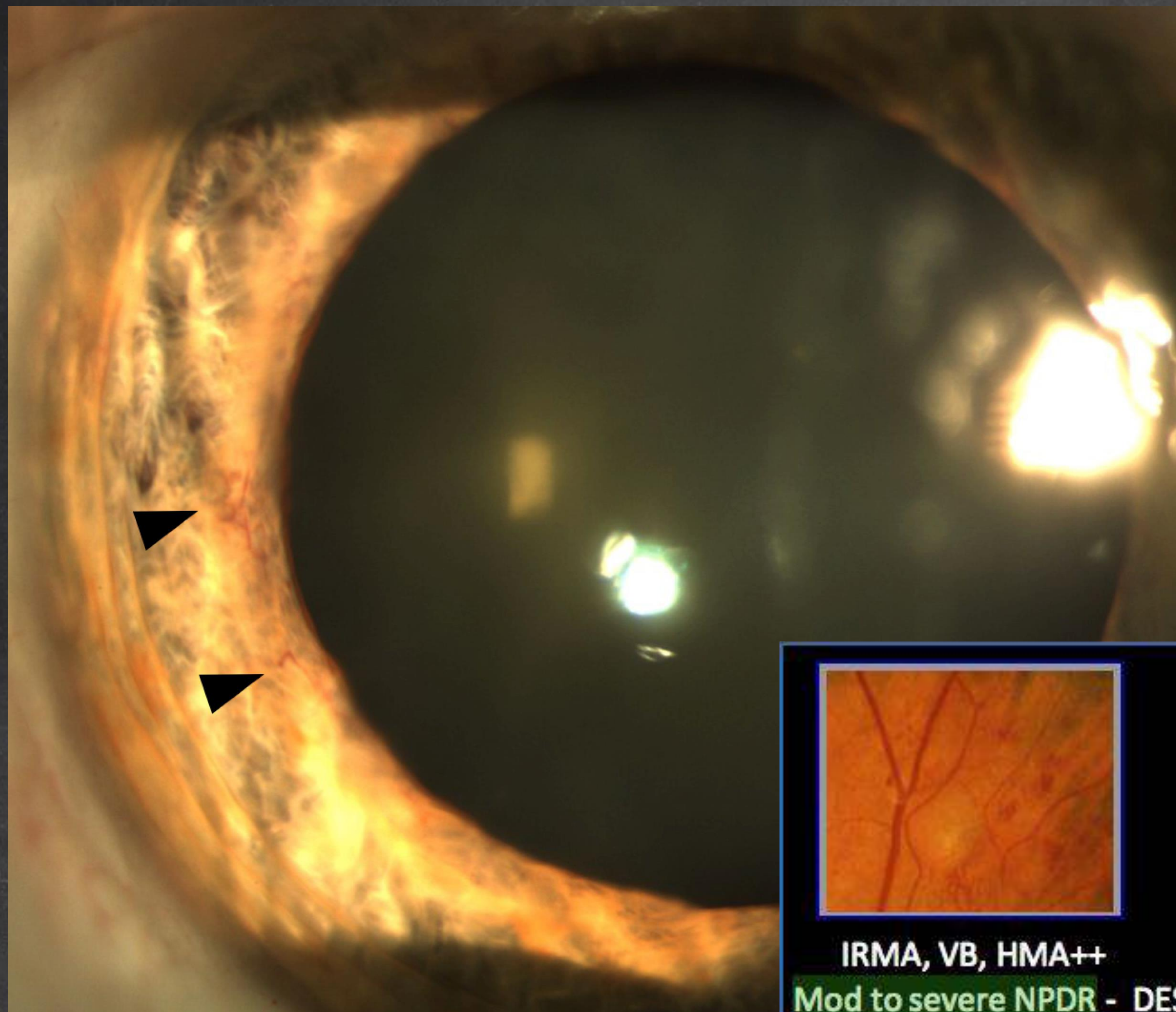
Cni DME



Follow up of patients with
diabetic retinopathy



Retinopathy/ Maculopathy Severity	AAO Follow up (Months)	Recommendation for Optometrists (Months)	Referral to Retina Specialist (Weeks)
Normal or minima NPDR	12	12	
Moderate NPDR	6-12	4-6	
Severe NPDR	3	Refer to Retina Specialist	4 weeks
PDR/ HRC PDR	3 vs. PRP	Refer to Retina Specialist	<1 week

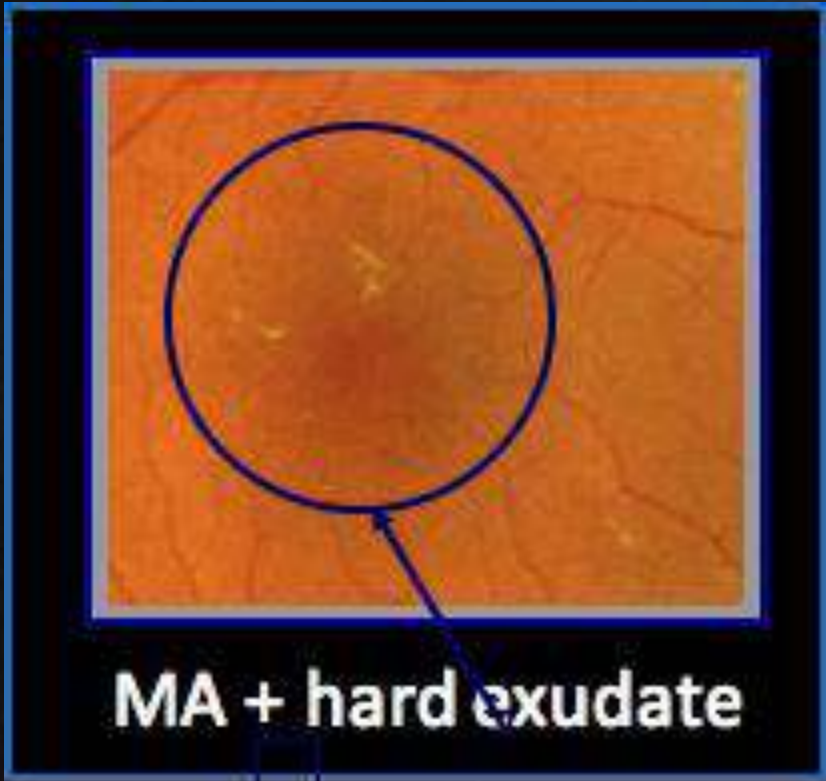


IRMA, VB, HMA++
Mod to severe NPDR -



HMA + VB + IRMA

DESP: R2 UKPDS: Levels 41-53



Retinopathy/ Maculopathy Severity	Follow up (Months)	Recommendation for Optometrists (Months)	Referral to Retina Specialist (Weeks)
MA or heme only	Based on DR grading	Based on DR grading Refer if decreased vision <u>20/40 or less</u>	1-4 weeks
Maculopathy > MA/heme	3-4 vs.Treatment	Refer to Retina Specialist	1-4 weeks

Referral to Retina Specialist:

1. Severe NPDR or worse
2. Macular exudate 'within arcades'
3. Macular thickening on OCT
4. Other urgent pathology clinically or by OCT e.g. VH, RD, etc..
5. Unexplained decreased vision

Thank You!

asallam@uams.edu