

The Monthly Newsletter for
Faculty, Staff and Friends of the
UAMS College of Medicine

UAMS
College of Medicine

COMmunication

December 2019

GO TO: [New Faculty](#) | [Recent Grants](#) | [Accolades](#)



~~Santa's~~ Sarah's Helpers

A new baby for the holidays – could anything be sweeter? Fast-acting friends in the College of Medicine Dean’s Office and the stellar team in UAMS Labor and Delivery helped ensure a joyous holiday season for **Sarah Sharp** and her family.

Sarah, a systems analyst supervisor for COM Graduate Medical Education, was due to give birth to her and husband Thomas’ first child on Dec. 9. But while working at her desk on Nov. 20, her “water broke” suddenly.

Dean’s Office colleagues **Leah Lacey-Watkins**, **Jennifer White**, **Jessica White** and **Sidney Wright** quickly found a wheelchair and rushed Sarah up to Labor and Delivery. There, certified nurse-midwife **Renee Yeager, APRN**, made a crucial discovery. The baby had flipped into breech position and the umbilical cord was prolapsed, creating an extremely dangerous situation that required an immediate C-section.

A virtual sea of Labor and Delivery team members sprung to action, including fourth-year resident **Dr. Kelsey Shnaekel**, second-year resident **Dr. Meredith McKinney** and **Dr. Abby Ramseyer**, a second-year maternal fetal medicine fellow.

Ruby Elizabeth Sharp was born minutes later. She required resuscitation, but her five-minute APGAR score showed dramatic improvement. The Sharps had a healthy baby girl.

“If I hadn’t been at UAMS, and if those girls hadn’t gotten me up to Labor and Delivery so quickly, I’m not sure Ruby would have made it,” Sarah said. “I am 100% grateful.”

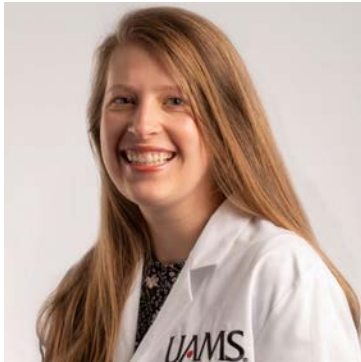


Distinguished Faculty: **Laura Hutchins, M.D.**, was honored as the 2019 Dean's Distinguished Faculty Scholar before a packed auditorium of colleagues Dec. 3. Read about Dr. Hutchins' journey to medical school and her decades of service in cancer care, research and leadership in the [COM Newsroom](#). Her talk, "Stories Heard at the Microscope," traced the evolution of cancer treatment and research over the past two centuries. A [video of the lecture](#) is available on Blackboard.

Back to the Top

New Faculty

This month we are pleased to introduce more of the faculty members who joined us this academic year. Please join us in welcoming these additions to the COM team!



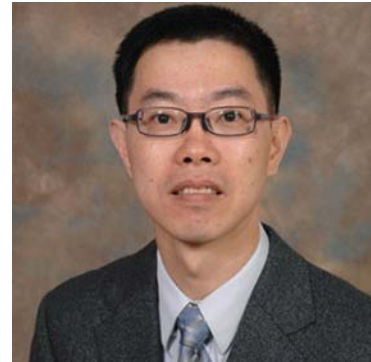
Katie Thurman Patel, M.D., has joined the Department of **Family and Preventive Medicine** as an Assistant Professor.

[READ MORE](#)



Tomoko Tanaka, M.D., has joined the Department of **Neurosurgery** as an Associate Professor in the Division of **Pediatric Neurosurgery**.

[READ MORE](#)



Neville Tam, Ph.D., has joined the Department of **Pharmacology and Toxicology** as an Assistant Professor.

[READ MORE](#)



Diana Munoz-Mendoza, M.D., has joined the Department of **Pediatrics** as an Assistant Professor in the Division of **Allergy and Immunology**.

[READ MORE](#)



Chanchaldeep (Amika) K. Sood, M.D., has joined the Department of **Pediatrics** as an Assistant Professor in the Division of **Allergy and Immunology**.

[READ MORE](#)



Scott Gatlin, M.D., has joined the Department of **Pediatrics** as an Associate Professor in the Division of **Cardiology**.

[READ MORE](#)



Sam Lee, M.D., has joined the Department of **Pediatrics** as an Associate Professor in the Division of **Cardiology**.

[READ MORE](#)



Erin Bennett, M.D., M.P.H., has joined the Department of **Pediatrics** as an Assistant Professor in the Division of **Critical Care**.

[READ MORE](#)



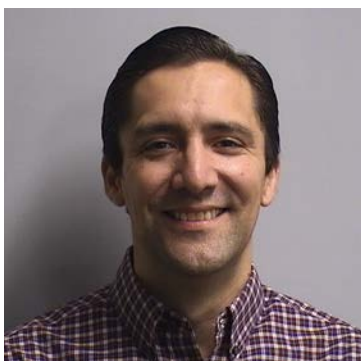
Kimberly Macferran, M.D., has joined the Department of **Pediatrics** as an Associate Professor in the Division **Developmental Pediatrics**.

[READ MORE](#)



Ryan C. Kwong, M.D., M.P.H., has joined the Department of **Pediatrics** as an Assistant Professor in the Division of **Emergency Medicine**.

[READ MORE](#)



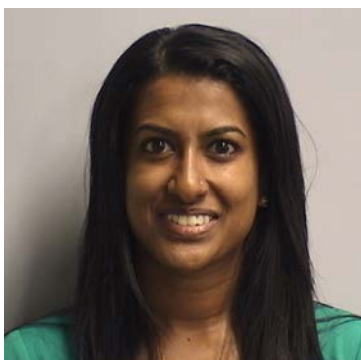
Adrian Chapa-Rodriguez, M.D., has joined the Department of **Pediatrics** as an Assistant Professor in the Division of **Gastroenterology**.

[READ MORE](#)



Sarah R. Sobik, M.D., M.P.H., has joined the Department of **Pediatrics** as an Assistant Professor in the Division of **General Pediatrics**.

[READ MORE](#)



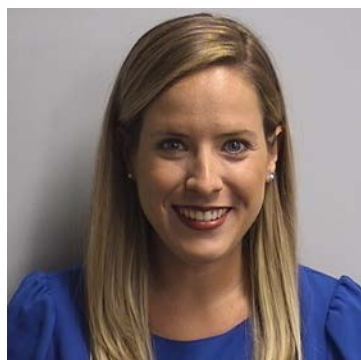
Archana Balamohan, M.D., has joined the Department of **Pediatrics** as an Assistant Professor in the Division of **Infectious Diseases**.

[READ MORE](#)



Timothy R. Onarecker, M.D., has joined the Department of **Pediatrics** as an Assistant Professor in the Division of **Infectious Diseases**.

[READ MORE](#)



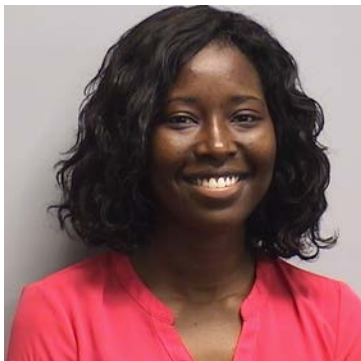
Stephanie G. Korff, M.D., has joined the Department of **Pediatrics** as Assistant Professor in the Division of **Neonatology**.

[READ MORE](#)



Zackary Shearer, M.D., has joined the Department of **Pediatrics** as an Assistant Professor in the Division of **Neonatology**.

[READ MORE](#)



Gwen Weatherspoon White, M.D., has joined the Department of **Pediatrics** as an Assistant Professor in the Division of **Neonatology**.

[READ MORE](#)



Shelby Dib, D.D.S., has joined the Department of **Pediatrics** as an Assistant Professor in the Division **Pediatric and Special Needs Dentistry**.

[READ MORE](#)

[Back to the Top](#)

Recent Grants

*Congratulations to the College of Medicine faculty members who received new **extramural grants** in November. This list, courtesy of the Office of the Executive Associate Dean for Research, excludes industry trials and awards under \$10,000.*



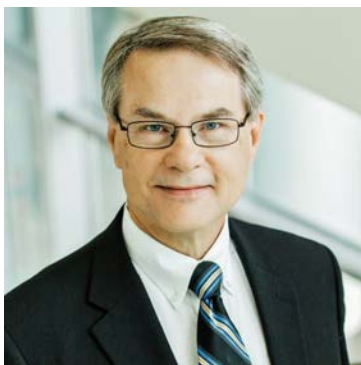
Emily English, Dr.P.H., M.P.S., Department of **Pediatrics**

Increasing Access and Awareness within the Farm to Institution Supply Chain (SCBG), Arkansas Agriculture Department (10/01/2019 – 09/30/2021), \$60,605.
(Funding total for year 1 only)



Teresa Hudson, Ph.D., Department of **Psychiatry**

Overdose Data to Action, Centers for Disease Control and Prevention (12/01/2019 – 11/30/2020), \$420,585. Pass through from Arkansas Department of Health.



Fred Prior, Ph.D., Department of **Biomedical Informatics**

20X023F TO 1, NIH/Nat. Cancer Institute, \$720,000. Pass through from Leidos.

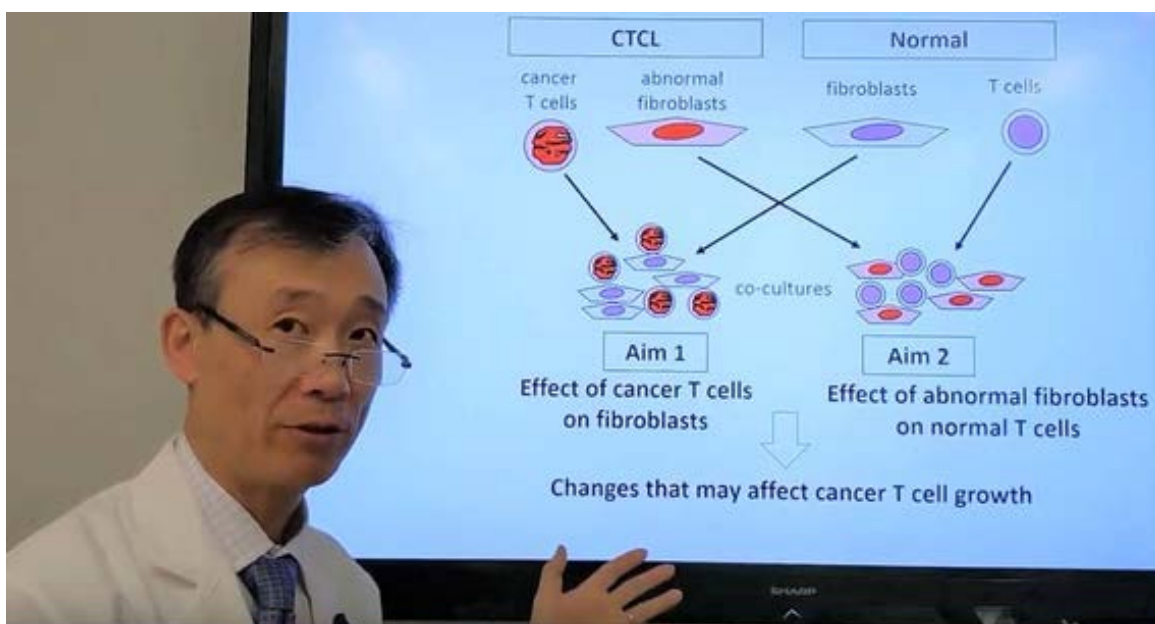
20X023F TO 2, NIH/Nat. Cancer Institute \$232,439. Pass through from Leidos.

20X023F TO 3, NIH/Nat. Cancer Institute, \$31,278. Pass through from Leidos.

(Project period for all grants is 08/31/2019 – 08/30/2022;

total shown here is for year 1 only)

Intramural Grants



Pilot Research for Special Populations | Congratulations to COM faculty members **Henry K. Wong, M.D., Ph.D.**, Professor and Chair of **Dermatology** (pictured above); **Melissa Zielinski, Ph.D.**, Assistant Professor of **Psychiatry**; and **Kristin Zorn, M.D.**, Associate Professor and Director of the Division of **Gynecologic Oncology** in the Department of **Obstetrics and Gynecology**, on their recent pilot grants from the UAMS Translational Research Institute for studies of special populations in Arkansas.

[READ MORE](#)

[Back to the Top](#)

Accolades



Have you read the latest Accolades from Dean **Christopher T. Westfall, M.D.**? The weekly email highlights recent honors and accomplishments of COM faculty, staff, residents and students. You can also [read Accolades here](#). If you know someone who deserves a shout-out, send your ideas to Dr. Westfall via **COM Internal Communications!**

These UAMS team members and students were named in Accolades this month:

Anita Akbar Ali
Teresita Angtuaco
Jesus Apuya
Stephen Beetstra
Teresita Bellido
Jonathan Bona
Gary Bowman
Jason Chang
Jungang Chen
Lu Dai
Ryan Dare
Kevin Davis
Carly Eastin
Theja Edala
Craig Forrest
Tom Frazier
Jerad Gardner
Matthew Green
Ronda Henry-Tillman
Shuk-Mei Ho
Brian Hohertz
Jacob Howard
Laura Hutchins
Mitch Jenkins

Mike Jennings
Joyce Johnsrud
John Jones
Se-Ran Jun
Nithin Karakala
Josh Kennedy
Katie Kimbrough
Justin Klucher
Gayathri Krishnan
Jennifer Laudadio
Jeannette Lee
Riley Lipschitz
Spyridoula Maraka
Neil Masangkay
Ashley Jones McMillan
Robin Morris
Tresor Mukiza
Rosemary Nabaweesi
Cam Patterson
Courtney Pearson
Tamara Perry
Steven Post
Zhiqiang Qin
Martin Radvany

Aru Reddy
Sung Rhee
Gloria Richard-Davis
Paula Roberson
José Romero
Ashley Ross
Matthew Sabatini
Ezgi Saylam
Mohammed Siddiqui
Frank Simmen
Jessica Snowden
Laura Stanley
Tonya Thompson
Renee Tolly
Freddy J.K. Toloza
Aravindhan Veerapandiyan
Bill Ventres
Sanjaya Viswamitra
Wayne Wahls
Jeanne Wei
Kent Westbrook
Michael Wilson
André Wineland

These COM departments were represented in Accolades this month:

Anesthesiology
Biochemistry/Molecular Biology
Biomedical Informatics
Biostatistics
Dermatology
Emergency Medicine
Family/Preventive Medicine
Geriatrics
Internal Medicine
Microbiology/Immunology
Neurobiology/Developmental Sciences
Neurology

Obstetrics/Gynecology
Orthopaedic Surgery
Otolaryngology/Head-Neck Surgery
Pathology
Pediatric/Special Needs Dentistry
Pediatrics
Pharmacology/Toxicology
Physiology/Biophysics
Psychiatry
Radiology
Surgery

Back to the Top

The *COMmunication* is published monthly to highlight key initiatives and developments in the COM, to introduce new faculty members and leaders, and to celebrate major professional honors and awards. The Dean's Office works in partnership with designated newsletter liaisons throughout the COM. To find your department's contact, read our submission guidelines or view past issues, visit the [COMmunication webpage](#).

Comments, questions and suggestions for improvements are always welcome. Call Tamara Robinson, Senior Communications Writer, at 526-5163, or click the red button below to email the *COMmunication*.

Comments? Ideas? Email Us!

UAMS | College of Medicine



